



**Noise Monitoring Result**

**Day Time (0700 - 1900hrs on normal weekdays)**

Location: M1a - Harbour Road Sports Centre

Date	Time	Weather	Measurement Noise Level			Baseline Level	Construction Noise Level	Limit Level
			Leq	L10	L90	Leq	Leq	Leq
Unit: dB(A), (30-min)								
31/03/15	9:30	Fine	72.3	74.5	68.0	72	56	75
08/04/15	14:32	Cloudy	71.7	74.0	67.5	72	72	75
13/04/15	8:00	Fine	72.5	74.2	68.0	72	61	75
21/04/15	10:33	Cloudy	72.2	74.5	67.5	72	72	75
27/04/15	13:20	Fine	72.4	74.5	67.0	72	59	75

Location: M2b - Noon-day gun area

Date	Time	Weather	Measurement Noise Level			Baseline Level	Construction Noise Level	Limit Level
			Leq	L10	L90	Leq	Leq	Leq
Unit: dB(A), (30-min)								
31/03/15	10:13	Fine	68.1	69.5	66.0	68	58	75
08/04/15	15:20	Cloudy	68.7	69.5	66.0	68	62	75
13/04/15	8:40	Fine	67.5	68.3	65.5	68	68	75
21/04/15	11:15	Cloudy	69.0	71.5	65.5	68	63	75
27/04/15	14:03	Fine	67.6	68.5	66.0	68	68	75

Location: M3a - Tung Lo Wan Fire Station

Date	Time	Weather	Measurement Noise Level			Baseline Level	Construction Noise Level	Limit Level
			Leq	L10	L90	Leq	Leq	Leq
Unit: dB(A), (30-min)								
30/03/15	9:09	Cloudy	64.8	66.0	62.5	69	65	75
10/04/15	11:28	Cloudy	65.7	66.5	64.0	69	66	75
13/04/15	9:17	Fine	65.5	66.5	64.0	69	66	75
21/04/15	13:00	Cloudy	65.3	66.5	63.5	69	65	75
27/04/15	14:42	Fine	63.9	65.5	62.0	69	64	75

Location: M4b - Victoria Centre

Date	Time	Weather	Measurement Noise Level			Baseline Noise Level	Construction Noise Level	Limit Level
			Leq	L10	L90	Leq	Leq	Leq
Unit: dB(A), (30min)								
30/03/15	9:48	Cloudy	64.7	66.0	62.5	67	64	75
10/04/15	13:00	Cloudy	68.0	69.6	63.0	67	60	75
13/04/15	9:54	Fine	71.1	73.5	65.0	67	69	75
21/04/15	13:37	Cloudy	65.3	66.5	62.5	67	65	75
27/04/15	15:21	Fine	69.0	72.0	64.0	67	64	75

Location: M5b - City Garden

Date	Time	Weather	Measurement Noise Level			Baseline Level	Construction Noise Level	Limit Level
			Leq	L10	L90	Leq	Leq	Leq
Unit: dB(A), (30min)								
30/03/15	10:28	Cloudy	69.6	73.0	65.0	68	64	75
10/04/15	13:42	Cloudy	67.5	69.5	64.5	68	68	75
13/04/15	10:28	Fine	66.8	68.0	64.5	68	67	75
21/04/15	14:20	Cloudy	68.6	70.0	66.0	68	60	75
28/04/15	10:10	Fine	69.6	70.5	68.0	68	64	75

Location: M6 - HK Baptist Church Henrietta Secondary School

Date	Time	Weather	Measurement Noise Level			Baseline Level	Construction Noise Level	Limit Level
			Leq	L10	L90	Leq	Leq	Leq
Unit: dB(A), (30-min)								
31/03/15	11:25	Fine	71.5	72.5	69.5	71	64	65
10/04/15	14:22	Cloudy	72.0	73.0	70.0	71	66	70
13/04/15	11:31	Fine	71.3	72.5	69.5	71	62	65
21/04/15	15:00	Cloudy	68.5	70.0	65.5	71	69	65
28/04/15	10:51	Fine	70.4	71.5	68.5	71	70	70



**Noise Monitoring Result**

**Day Time (0700 - 1900hrs on normal weekdays)**

Location: M7e - International Finance Centre (Eastern End of Podium) (Reference Station)

Date	Time	Weather	Measurement Noise Level			Baseline Level	Construction Noise Level	Limit Level
			Leq	L10	L90	Leq	Leq	Leq
Unit: dB(A), (30-min)								
31/03/15	8:00	Fine	63.7	65.8	61.1	67	64	N/A
10/04/15	10:03	Cloudy	66.7	69.0	62.5	67	64	N/A
14/04/15	9:00	Fine	75.3	76.5	63.0	67	75	N/A
21/04/15	8:20	Cloudy	68.5	69.2	66.9	67	64	N/A
27/04/15	10:07	Fine	68.6	70.5	64.0	67	64	N/A

Location: M7w - International Finance Centre (Western End of Podium)

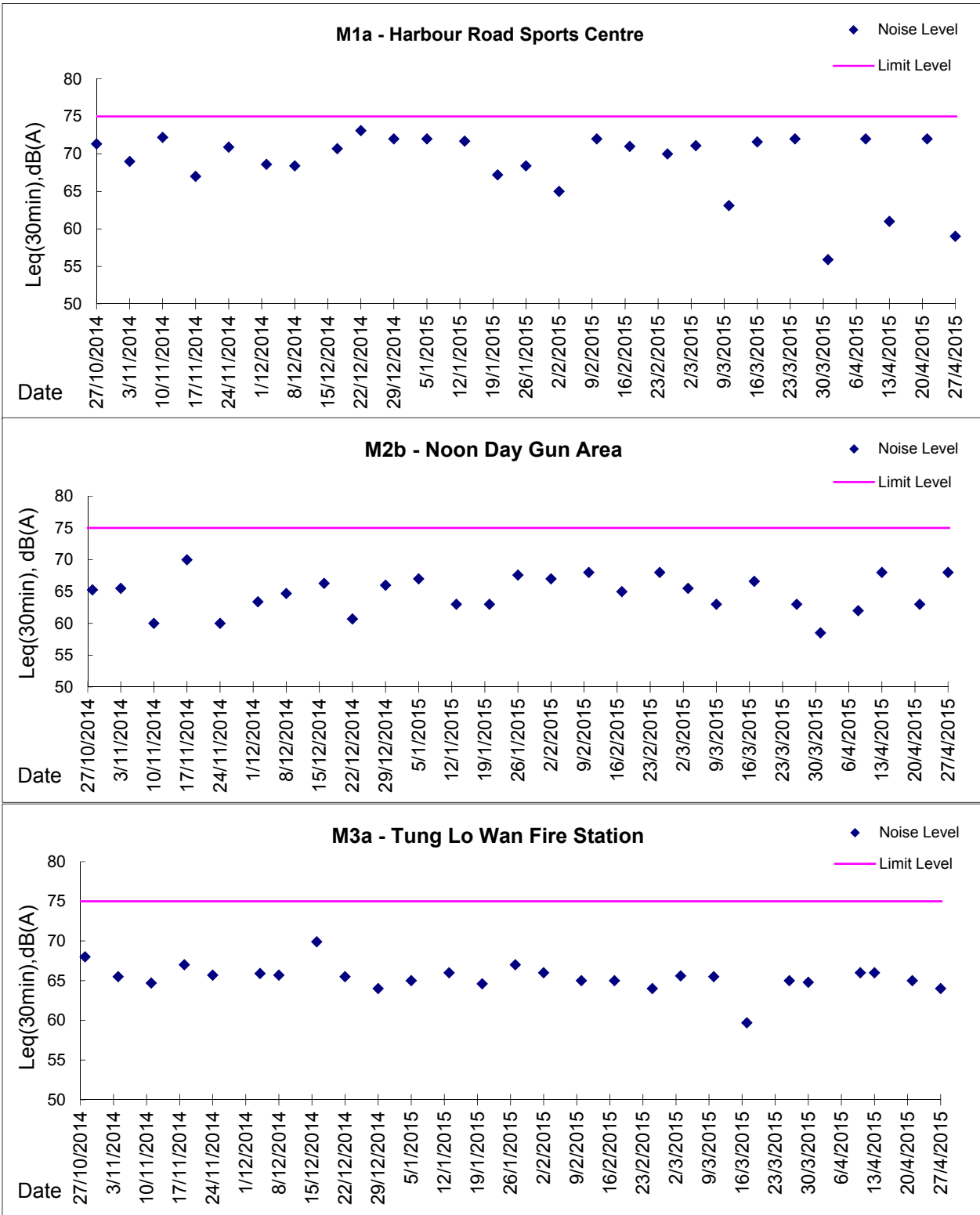
Date	Time	Weather	Measurement Noise Level			Baseline Level	Construction Noise Level	Limit Level
			Leq	L10	L90	Leq	Leq	Leq
Unit: dB(A), (30-min)								
31/03/15	8:40	Fine	65.6	67.0	63.0	69	66	75
10/04/15	10:39	Cloudy	64.3	65.5	61.5	69	67	75
14/04/15	10:10	Fine	68.4	69.0	62.5	69	68	75
21/04/15	8:55	Cloudy	67.2	67.5	63.5	69	67	75
27/04/15	10:42	Fine	65.1	67.0	61.5	69	65	75

Location: M8 - City Hall

Date	Time	Weather	Measurement Noise Level			Baseline Level	Construction Noise Level	Limit Level
			Leq	L10	L90	Leq	Leq	Leq
Unit: dB(A), (30-min)								
30/03/15	11:15	Cloudy	59.8	61.5	54.5	64	60	70
08/04/15	13:43	Cloudy	62.0	64.5	56.5	64	62	70
14/04/15	11:00	Fine	59.7	61.0	55.5	64	60	70
21/04/15	9:45	Cloudy	60.4	61.5	55.5	64	60	70
27/04/15	11:30	Fine	59.2	61.5	55.5	64	59	70



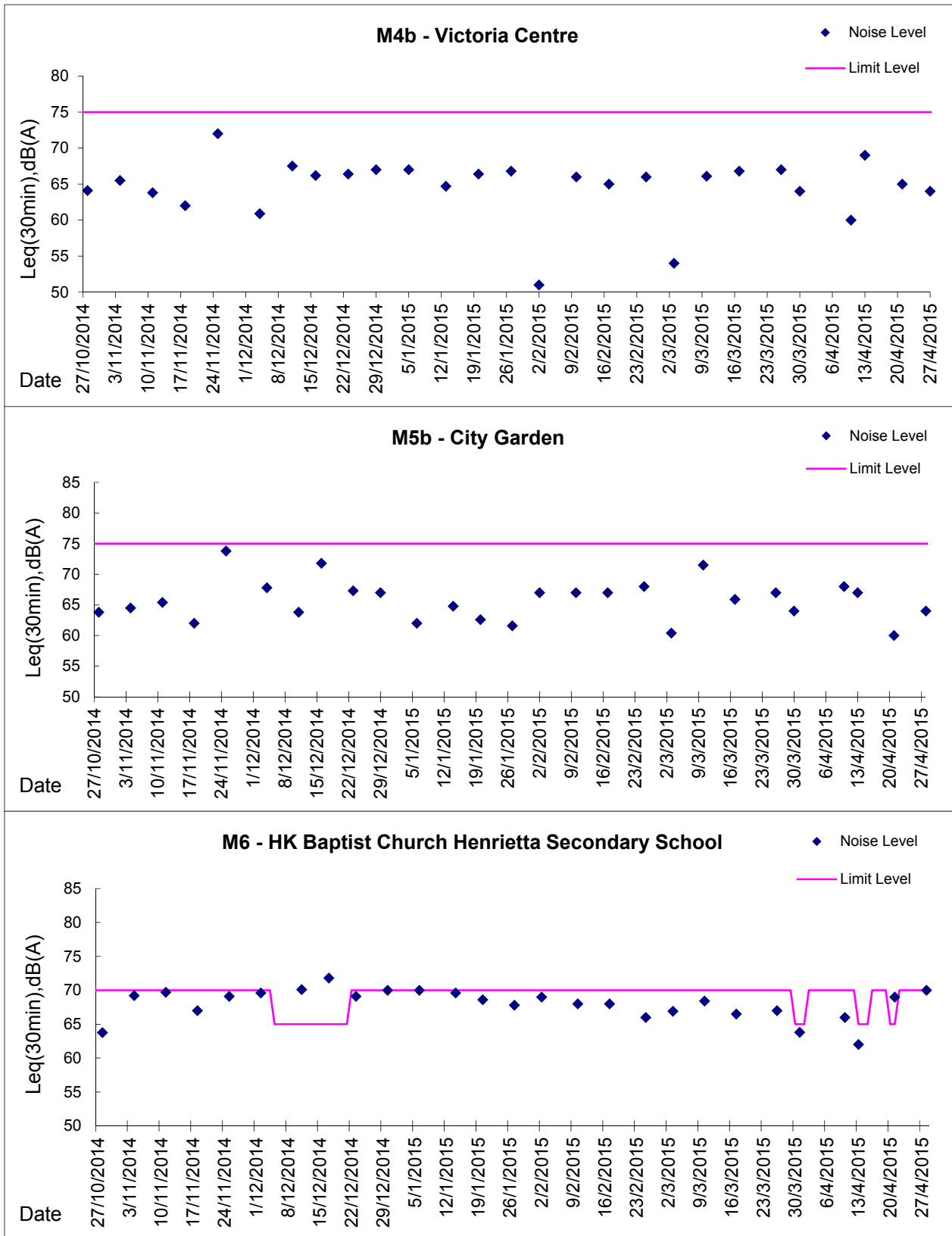
**Graphic Presentation of Noise Monitoring Result**  
**Day Time (0700 - 1900hrs on normal weekdays)**





Graphic Presentation of Noise Monitoring Result

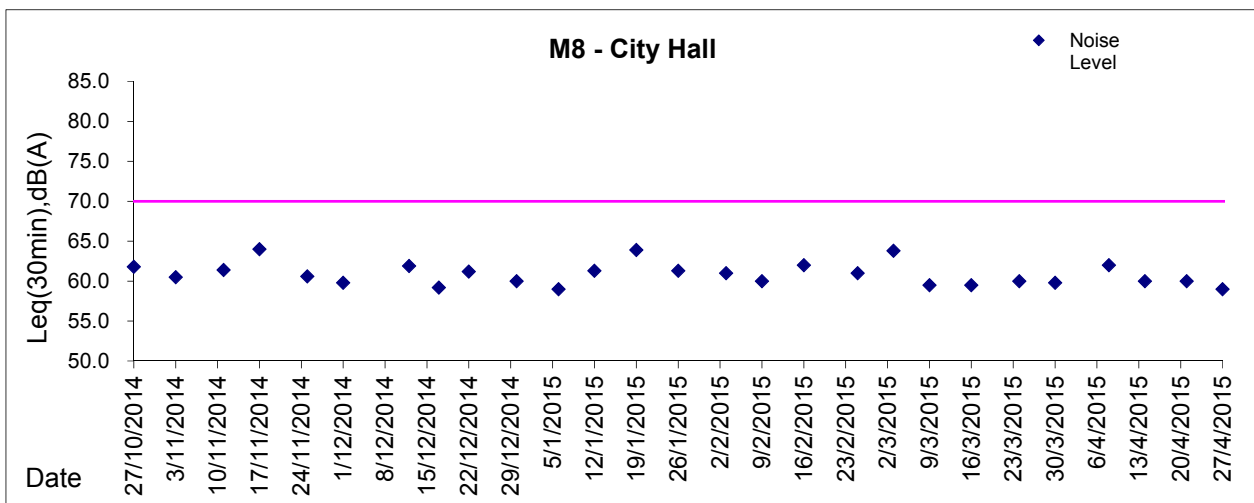
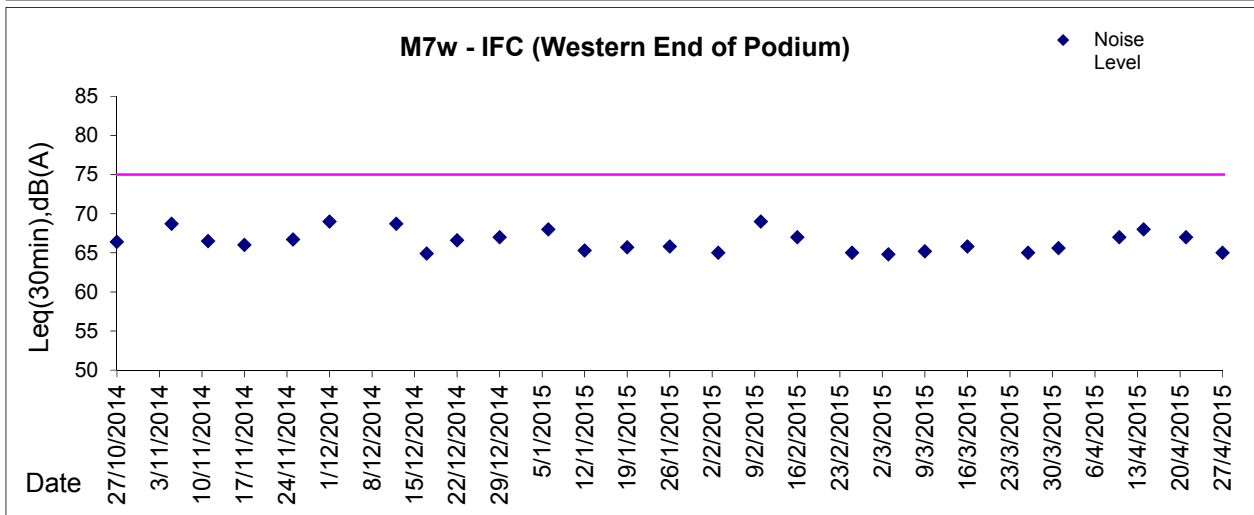
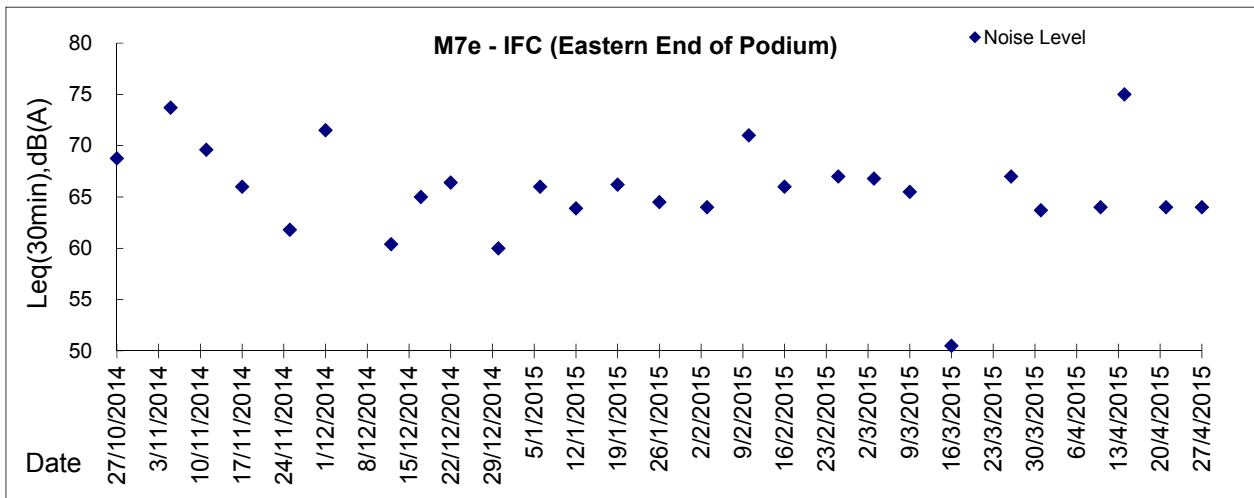
Day Time (0700 - 1900hrs on normal weekdays)





**Graphic Presentation of Noise Monitoring Result**

**Day Time (0700 - 1900hrs on normal weekdays)**



\* Remark: M7e - IFC (Eastern End of Podium) is a reference monitoring station